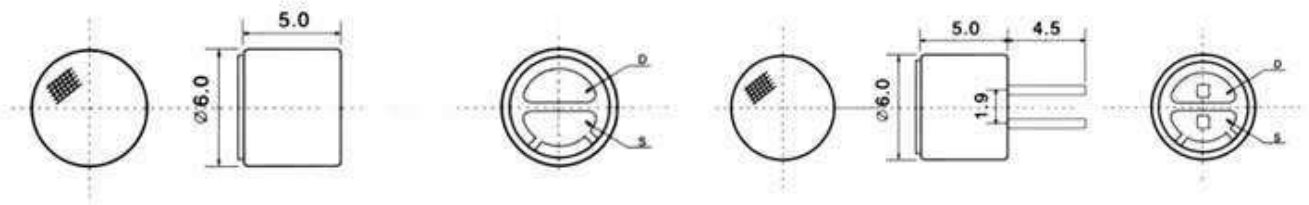


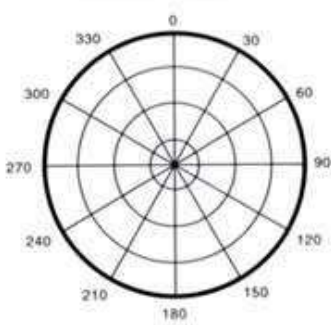


contact:

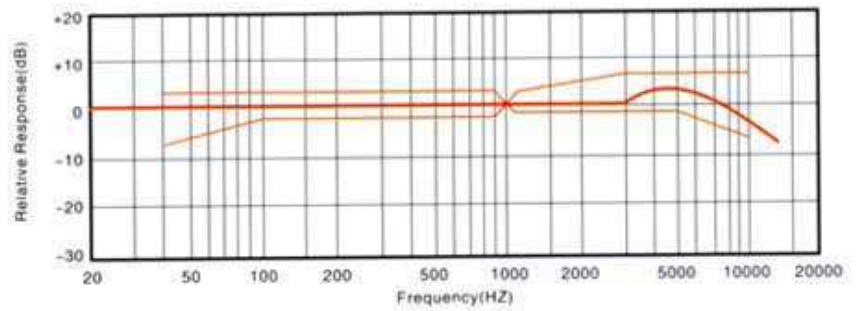
Dimension Drawing(Unit:mm)



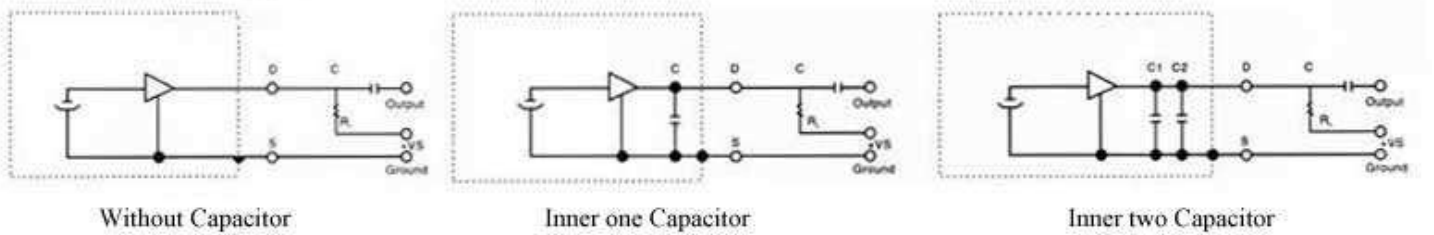
Polar Directivity Pattern



Typical Frequency Response Curve



Measure Cricuit



Without Capacitor

Inner one Capacitor

Inner two Capacitor

Detail Specifications:

Model No.	DGO6050CD-P		
Sensitivity(0dB=1v/ μ bar,1KHz)	-36dB ~ -46dB	Operation Voltage(Max./Std.)	4.5V
Impedance	Low impedance(2.2K Ω -30%)	Resistance(RL):	2.2K Ω
Directivity	Omni-directinal	Current Consumption:	Max.0.5.mA
Frequency	20~16, 000Hz	Sensitivity Reduction	Within -3dB at 3V
Max.operation voltage	10V	S/N Ratio	More than 60dB